



VIKAS INDUSTRIES

A GOVT. OF INDIA RECOGNISED STAR EXPORT HOUSE

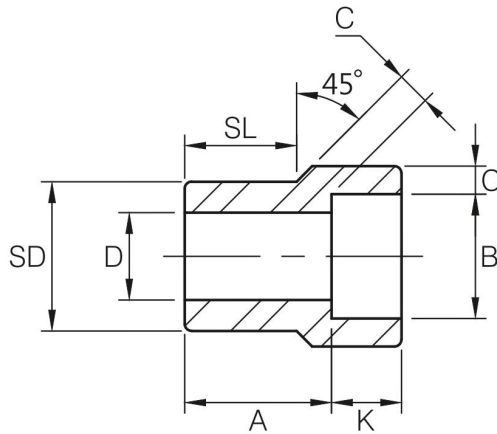


AN ISO 9001: 2015 CERTIFIED COMPANY

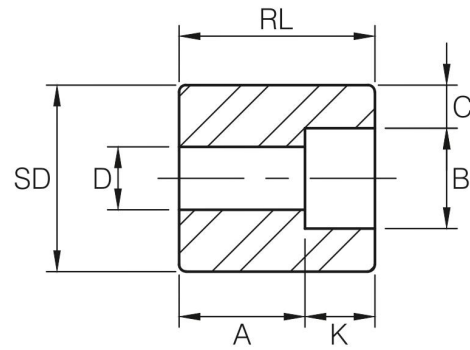
A UL LISTED COMPANY

REDUCER INSERT

MSS SP-79-2011



TYPE 1



TYPE 2⁽¹⁾

Dimensions are in millimeters.

Nom. Pipe Size	Type ⁽²⁾		Socket		Shank Dia. SD	Laying Length A		Bore D		Wall (Min) C		Length			
												SL		RL (Min)	
	3M	6M	Dia. B	Depth K		3M	6M	3M	6M	3M	6M	3M	6M	3M	6M
3/8 x 1/4	1	1	14.4	9.5	17.1	19.0	21.3	9.2	6.3	3.78	4.60	14.2	15.7	-	-
1/2 x 3/8	1	1	17.8	9.5	21.3	20.6	23.1	12.5	9.1	4.01	5.03	15.7	15.7	-	-
1/2 x 1/4	1	1	14.4	9.5	21.3	20.6	20.6	9.2	6.3	3.78	4.60	15.7	15.7	-	-
3/4 x 1/2	1	1	22.0	9.5	26.7	22.4	25.4	15.8	11.7	4.67	5.97	17.5	19.0	-	-
3/4 x 3/8	2	1	17.8	9.5	26.7	15.7	22.4	12.5	9.1	4.01	5.03	-	19.0	26.9	-
3/4 x 1/4	2	2	14.4	9.5	26.7	17.5	22.4	9.2	6.3	3.78	4.60	-	-	26.9	32.0
1 x 3/4	1	1	27.4	12.5	33.4	23.9	28.4	20.9	15.5	4.90	6.96	19.0	20.6	-	-
1 x 1/2	2	1	22.0	9.5	33.4	15.7	28.4	15.8	11.7	4.67	5.97	-	20.6	28.4	-
1 x 3/8	2	2	17.8	9.5	33.4	17.5	22.4	12.5	9.1	4.01	5.03	-	-	28.4	33.2
1 x 1/4	2	2	14.4	9.5	33.4	19.0	23.9	9.2	6.3	3.78	4.60	-	-	28.4	33.2
1-1/4 x 1	1	1	34.1	12.5	42.2	25.4	30.2	26.6	20.7	5.69	7.92	20.6	22.4	-	-
1-1/4 x 3/4	2	2	27.4	12.5	42.2	17.5	20.6	20.9	15.5	4.90	6.96	-	-	31.7	34.7
1-1/4 x 1/2	2	2	22.0	9.5	42.2	19.0	22.4	15.8	11.7	4.67	5.97	-	-	31.7	34.7
1-1/4 x 3/8	2	2	17.8	9.5	42.2	20.6	23.9	12.5	9.1	4.01	5.03	-	-	31.7	34.7
1-1/4 x 1/4	2	2	14.4	9.5	42.2	22.4	25.4	9.2	6.3	3.78	4.60	-	-	31.7	34.7
1-1/2 x 1-1/4	1	1	42.9	12.5	48.2	28.4	35.0	35.0	29.4	6.07	7.92	22.4	25.4	-	-
1-1/2 x 1	2	1	34.1	12.5	48.2	17.5	29.2	26.6	20.7	5.69	7.92	-	25.4	33.2	-
1-1/2 x 3/4	2	2	27.4	12.5	48.2	19.0	25.4	20.9	15.5	4.90	6.96	-	-	33.2	39.6
1-1/2 x 1/2	2	2	22.0	9.5	48.2	20.6	26.9	15.8	11.7	4.67	5.97	-	-	33.2	39.6
1-1/2 x 3/8	2	2	17.8	9.5	48.2	22.4	28.4	12.5	9.1	4.01	5.03	-	-	33.2	39.6
2 x 1-1/2	1	1	49.0	12.5	60.3	31.8	38.9	40.8	33.9	6.35	8.92	25.4	28.7	-	-
2 x 1-1/4	2	2	42.9	12.5	60.3	20.6	23.9	35.0	29.4	6.07	7.92	-	-	38.1	41.1
2 x 1	2	2	34.1	12.5	60.3	22.4	25.4	26.6	20.7	5.69	7.92	-	-	38.1	41.1
2 x 3/4	2	2	27.4	12.5	60.3	23.9	26.9	20.9	15.5	4.90	6.96	-	-	38.1	41.1
2 x 1/2	2	2	22.0	9.5	60.3	25.4	28.4	15.8	11.7	4.67	5.97	-	-	38.1	41.1

(1) At the option of the manufacturer Type 2 Reducers may be furnished in type 1 configuration.

(2) 3M & 6M symbols denote 3000 and 6000 classes.